

# BC-DECK UV

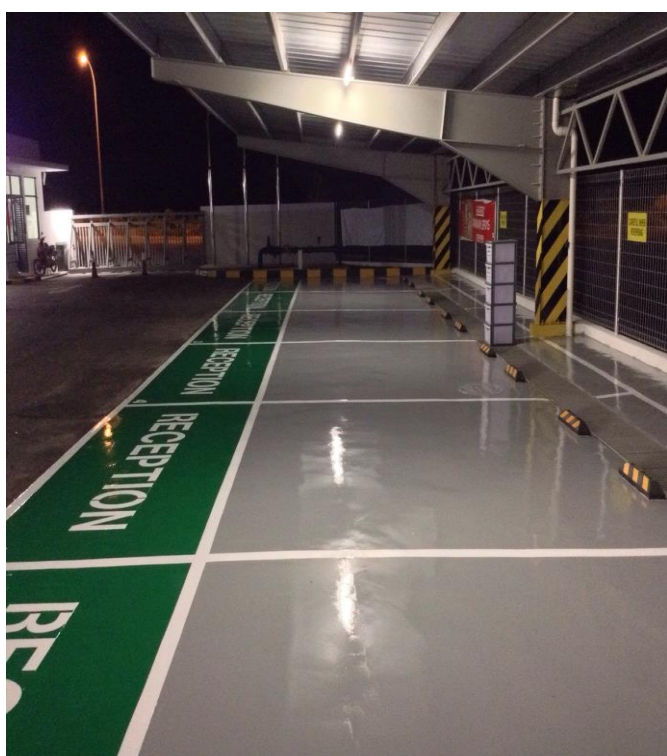
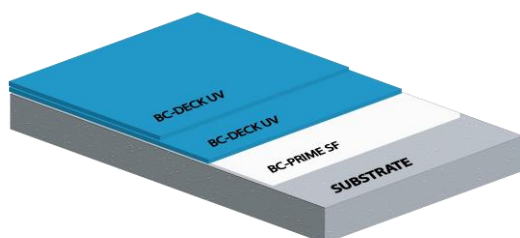
## A TWO COMPONENTS POLYESTER BRANCHED POLYURETHANE COATING

### DESCRIPTION:

**BC-DECK UV** is a colored/clear; gloss, matt, satin ready to use solvent base two component coating based on high quality polyester branched polyurethane resin polyester branched polyurethane resin.

### PRODUCT FEATURE:

**BC-DECK UV** is used as colored/clear coating for areas with light, medium and high traffic. An extremely finish for interior and exterior use. Designed to resist chemical, ultra violet heat and abrasion, suitable for hard ware areas such as industrial and commercial floor and wall, Car park decks, garages, warehouse, pedestrian areas, laboratories, electronic clean room, pharmaceutical, refineries, printing pulp paper, mills, roofing and other industrial plants sectors where chemical resistance are required.



### BENEFITS:

- Seamless, monolithic application
- Hygienic, easy to clean.
- High chemical resistance to wide range of chemical.
- Abrasion resistance, against light or high traffic and trolley movement
- Hard wearing floors.
- Wide range of colors.

### COLORS:

- RAL K5 Classic color chart available

### FINISHING:

- Gloss, Satin, Matt

### TECHNICAL DATA

Density at 28 <sup>0</sup> C g/ml(mixed)	1.3 ±0.05g/ml		
Adhesive strength	>1.5 N/mm ( Concrete failure )		
Abrasion resistance	1000 cycles weight loss 5mg		
Water Permeability	Nil-Karsten test (impermeable)		
Recommended dry film thickness	±80μ		
Solids Content	70%		
Thinner (5%±)	BC-Deck UV Thinner		
Cleaner	BC- Washing Thinner		
Relative Humidity	<88°C		
ASTM D 4060 -10 Taber Abraser	37mg		
Wear Index in mg/1000 revolutions/1kg			
BS476:Part 6: 1989+A1:2009 (Fire Propagation Index (I) )	<2.0		
ASTM E96/E96M-10	1.23±		
Water Vapor Transmission, g/hr.m <sup>2</sup>			
Mixing ratio by weight	Part A : Part B		
	Gloss 4 : 1		
	Satin 4 : 1		
	Matt 4.5 : 1		
Pot life at 30 <sup>0</sup> C	2 hours		
Shelf life & storage (unopened and in good conditions temperature 10 <sup>0</sup> C to 30 <sup>0</sup> C)	12months		
Material Consumption (mixed)	0.13kg/m <sup>2</sup>		
Recoating time	12 hours min @ 30 <sup>0</sup> C 48 hours max @ 30 <sup>0</sup> C		
Curing time:			
	20 <sup>0</sup> C	25 <sup>0</sup> C	32 <sup>0</sup> C
Human traffic	24hrs	22hrs	20hrs
Light traffic	36hrs	34hrs	24hrs
Fully chemicals cure	10days	7days	7days

## BC-DECK UV

### A TWO COMPONENTS POLYESTER BRANCHED POLYURETHANE COATING

#### SUBSTRATE REQUIREMENT & PREPARATION:

Substrate concrete or screed should be a minimum of compressive strength 25N/mm<sup>2</sup> and adhesive pull-off strength of minimum 1.5N/mm<sup>2</sup>. The substrate should be clean and free from laitance, oil, dust, loose constituents, paint residues, chemicals, algae and other contamination should be removed. The substrate should be dry and free from ground water pressure. If substrate moisture exceeded 4%, apply BC-GARD EM (Epoxy mortar) (Compressive strength 60N/mm<sup>2</sup>) 4-5mm thick or apply BC-CEM MB 2-3mm thick as a moisture barrier. The substrate must be prepared by vacuum shot blasting, rough contaminations to remove by grinding. Cracks and hollows should be properly remedied. Prepare grooves 3mm wide x 3mm deep at all edges, bay joints columns, doorways and drains for anchoring purpose.

#### MIXING :

Stir Part A mix for 30seconds by using a suitable electrical stirrer ( with 750 RPM high power mixer ), then add all of Part B ( Hardener ) and mix both liquid parts thoroughly for one minute until it fully achieved a homogeneous, then slowly add 5% of BC-Deck UV Thinner (if need) while mixing continues for a further one minute 30 seconds until a fully homogenous mix has been achieved.

#### APPLICATION :

By rolling, brushing or spraying. As finish we recommended to roll in one direction back roll with a wide short-pile mohair roller.

#### TEMPERATURE CONDITIONS OF APPLICATIONS :

- Do not apply when the relative humidity exceeds 90% on when the surface to be coated is less than 5% above the dew point.
- Do not apply temperatures below 5°C and temperatures above 40°C

#### Maintenance and care after cure :

We recommend basic cleaning and maintenance will prolong the life of epoxy floors, clean regularly using a single or double headed rotary scrubber drier in conjunction with alkaline detergent.

#### Further Information:

Warning and precautions information relating to the safe handling of this product should be found in Material Safety Data Sheet. To be advise to put on suitable clothing and eye-ware for protection purpose. The application area/site must be in good ventilation otherwise advisable to use a portable exhaust fan.

#### Important Note :

Best Crete product are warranty against defective materials. Due to different substrate and working conditions, no guarantee of an application result or any liability claims. The users are required to have a test ahead based on their intended use.